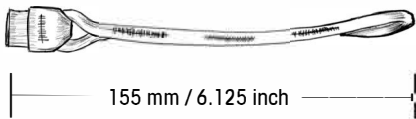
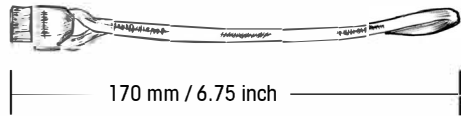


**ALink for Main Canopies**  
 PN: P 1487-00 (Gray Bartack)

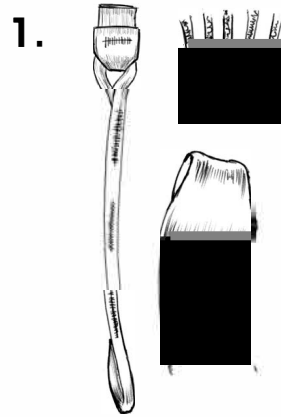


**ALink for Reserve Canopies**  
 PN: P 1487-01 (Red Bartack)



## Instructions for ALink Installation

Aerodyne Research, LLC: 1407 Flightline Blvd Unit 14 Deland, FL 32724. USA.  
 +1-813-891-8300 [www.flyaerodyne.com](http://www.flyaerodyne.com)



Pass the ALink thru the suspension line loops and riser as shown.

Ensure that you have passed the ALink thru all the suspension lines and that the suspension lines are clear to move.

Pass the ALink loop thru the risers, as shown.

Pass the ALink loop thru the suspension lines one more time, as shown.

Ensure that the ALink passes thru all the suspension line loops.

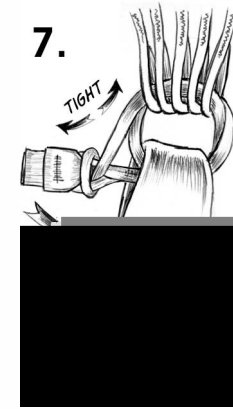
Check that the suspension lines are clear to move, make sure you have not passed the ALink in between the yarns of the lines.



Pass the loop end thru the tab end, as shown.

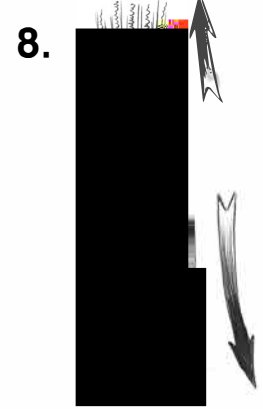


Feed the loop back over the tab.



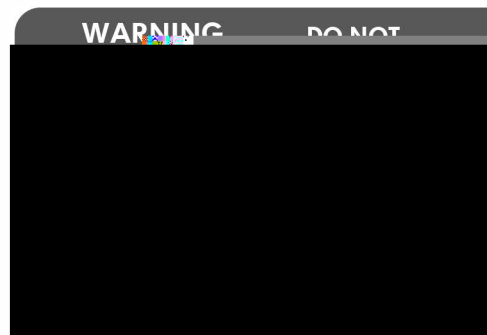
Larkshead, as shown. Pull tight, ensure the larkshead is secure.

Check that the suspension lines can move freely over the ALink and make sure you have not passed the ALink in between the yarns of the suspension lines.



Tuck the tab away as shown.

Hold the suspension lines and riser and give a sharp pull to set the ALink.



**NOTE:** It is recommended you replace the ALinks with every new lineset. Check the ALinks for excessive wear and tear, and replace when necessary.